



SWENews

ASPIRE • ADVANCE • ACHIEVE

Volume 7, Issue 1, October 2010

Publication of the Tampa Bay Area Section

Society of Women Engineers

Tampa Bay Area Section

President

Lara Bartholomew, P.E.
King Engineering Assoc, Inc.

lbartholomew@kingengineering.com

Vice President

Tara Spieler, P.E.
Kisinger Campo & Assoc Corp.
TSpieler@kisingercampo.com

Treasurer

Seung Yi Park, P.E.
City of Tampa

seungyipark@gmail.com

Secretary & Newsletter Editor
Shelly Castro

Tampa Electric Company
sscastro@tecoenergy.com

Section Representative

Anjana R. Swann, P.E.
Hillsborough County Gov't
swanna@hillsboroughcounty.org

USF Counselor

Sandy Pettit
spettit@verizon.net



President's Message

I can't tell you how excited and honored I am to serve as the section President for FY 2011. This year, we want our focus to be on YOU, our members and supporters. So here is a list of the top 5 things you need to know:

1. We currently have 5 general membership meetings scheduled through the end of the year. Two of these will include professional development topics, two will be social/networking events, and one will be a tour. Additionally, we plan to have one outreach event this year.
2. Our section website is www.swetampabay.org. The website has been redesigned, so please stop by and check it out!
3. You can add the SWE Tampa Bay calendar to your Google calendar if you have a gmail account. As items are added to the calendars, members will receive an invitation that they can accept.
4. There are several leadership positions for this fiscal year still open. Descriptions are available on the website.
 - a. Nominating Committee Chair & members (for FY 2012 Candidates)
 - b. Membership Chair
 - c. Outreach Chair
 - d. Publicity Coordinator
 - e. Newsletter Editor
 - f. Professional Development Coordinator
5. National Conference is in our backyard this year. It is being held in Orlando. If you can't attend live, there are also remote attendance options for some of the sessions this year. If you will be there, please let me know so that we can meet for lunch and get to know each other better. Keep in mind that the career fair is a great way to find a job or just network.

I hope you will join us for our Annual kickoff social at GameWorks on October 13th.

Inside this issue:

| | |
|------------------------|---|
| President's Message | 1 |
| Section Meeting Notice | 1 |
| USF Section Info | 2 |
| SWE10 Conference | 2 |
| Brag Box | 2 |
| Committee Info | 2 |



SWE Tampa Bay Section Meeting

Date: October 13th

Time: 6:00 p.m.

Location: GameWorks,
2201 7th Ave, Ybor City

Phone: 813-228-1111

For more information, log-in to swetampabay.org.





USF COLLEGIATE SWE SECTION

Next USF Student Section Meeting

Date: October 7th

Time: 6:30pm

Place: Success Center at USF's Tampa Campus (4202 Fowler Ave)

If you have any questions or need additional information on the upcoming meetings, you can contact the USF Collegiate SWE Section through the following avenues:

Email: usf.swe.president@gmail.com

Facebook: Look us up! Our Facebook group name is **USF Society of Women Engineers**

Early-Bird Registration
Deadline Extended to
September 26

For more information,
click on the following
link:

<http://we10.swe.org/>



The Brag Box

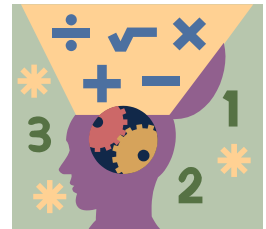
After 30 1/2 years at Honeywell International, Karen DeFelix retired on June 1st. She started out as an Engineering Assistant and while working full-time obtained her Bachelor in Engineering Technology degree from USF and graduated Summa Cum Laude. In addition, she received the Outstanding Part-Time Student award and became a member of the Phi Kappa Phi Engineering Honor Society. She went on to obtain her Masters in

Engineering Management while working full-time and raising 2 children. Her final position was Senior Technical Manager in charge of the Engineering Test Services—Software Group for Space. Her new loves are spending time with her husband Bruce, taking cruises, and water colors. Congratulations Karen!!

If you have some info you would like to share with your SWE friends, send a note to Shelly at sscastro@ecoenergy.com

Motivational Quote

“Man’s mind, once stretched by a new idea, never regains its original dimensions.” - Oliver Wendell Holmes Jr.



Committee Opportunities

We have volunteer opportunities for you! Please log-in to SWETampabay.org for more information.

