



SWENEWS

Volume 2, Issue 2, January 2005

Publication of the Society of Women Engineers, Tampa Bay Area Section

SWE in Perspective

by Carissa Giblin

**Society of Women
Engineers**
Tampa Bay Area Section

President
Carissa Giblin
Mosaic
carissa.giblin@swe.org

Vice President &
Section Representative
Sandy Pettit
Hillsborough County
sandy.pettit@swe.org

Secretary
Malika Yapparov
Mosaic
malikayapparov@mosaic.com

Treasurer
Seung Park
Camp Dresser & McKee
ParkSY@cdm.com

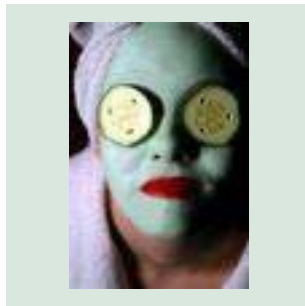
Publicity Chair &
Newsletter Editor
Karen Karvazy
Chastain Skillman
KarenK@chastainskillman.com

Executive Council
Chair Positions Available

Hello SWE Members and Friends:

Each year the section officers participate in the strategic planning for the year; we always look forward to January as the focus of our Work/Life balance sessions. We hope that you can join us at the first of several Ladies on the Green outings and the Safety Harbor Spa Day.

“Ladies on the Green” provides a supportive and fun environment to learn golf. I still can’t believe that after my first golf session with SWE, my manager invited me to join him and 2 other managers on the golf course. I still had my clubs in the car trunk! If not for the advice of a fellow player the night before, I’m not quite sure I would have accepted the invite. It was



Join SWE Members at Safety Harbor Spa Jan. 29 (contact Sandy Pettit for details)

a networking opportunity I was able to approach with confidence. But I’m not telling anyone my score!

The Safety Harbor Resort and Spa offers a fantastic group rate, especially when you consider the full use of the facilities for the day. Join us in re-energizing ourselves!

As we enter the second half of the SWE calendar, the focus also turns towards Recognition. If you review the types of national awards on the SWE website, you will notice the diversity. From Distinguished New Engineer to Entrepreneur of the Year to Fellow Grade distinction, there is an award for almost every career phase. SWE-TBA understands the value of promoting and celebrating our members’ accomplishments.

We have been involved with 4 successful nominations so far. And we need your help to continue the tradition. Take a moment to peruse the Membership page and let us know about your candidate. Note that person may be you.

In February, I hope that you can also celebrate National Engineers’ Week – an event devoted to recognizing the role engineering and engineers play in our world - with other West Coast engineering societies in the annual banquet. Locally, we will be recognizing Sonia Lowery as the Florida West Coast SWE Student of the Year. Among other accomplishments, Sonia, previous

In this issue:

Membership News	2
Upcoming Events	3
SWE Volunteers	4
Introducing...	5
E-Banquet Registration	6

Continued on Page 3



News in Brief

Ladies on the Green

Need to wind down? How about spending an afternoon getting a little exercise and learning something new or improving your game? Come join other SWE members during this casual game of golf to socialize and challenge yourself. All levels of skill are invited, including those who don't know what is meant by green and birdie.

When: Saturday January 22nd at 2:00 pm

Where: The Countryway Golf Club
1111 West Waters Ave.,
Tampa, FL 33635
813-854-1182
(maps available upon request)

How Much, You Ask?

\$13 per round of golf incl. cart rental
\$10 if you need to rent clubs
\$5 for a bag of recycled balls



Please RSVP to Carissa Giblin at Carissa.Giblin@swe.org
or (813)781-2174 so enough tee time reservations are made.

Of Interest to SWE Members...

SWE members receive a monthly electronic newsletter from Headquarters that briefs everyone on major opportunities and initiatives.

SWE friends, you can access the newsletter at <http://www.swe.org/E-newsletter/>

One article of particular interest is Jill Tietjen's response to the question "Women, Why So Few?" in the October issue of *IEEE Spectrum*. Her article identifies the answer candidly – the image of engineering is in need of a good makeover. Go to the link below and decide if you agree. The good news is that each one of us can make a difference in making the question go away.

<http://www.spectrum.ieee.org/careers/careerstemplate.jsp?ArticleId=n100104>

STRATEGIC PRIORITIES: INCLUSIVE ORGANIZATION

The Society of Women Engineers has a mid-range plan which includes five strategic priorities. The strategic priorities provide a framework for the growth of the society and direction to the local sections. Inclusive Organization is one of the five strategic priorities.

Inclusive Organization

SWE will be an inclusive organization focused on issues of interest to women of all backgrounds in engineering and technical careers

Have something for the newsletter?

Send any interesting news/photos to

Karen Karvazy at

karenk@chastainskillman.com



News in Brief

Events Calendar

January 2005

New Year's Day - Jan 1

Martin Luther King Day - Jan 18

Ladies on the Green - Jan 22

SWE S pa Day - Jan 29



February 2005

Valentine's Day - Feb. 14

Leading Without Authority Web Development

Seminar (details soon to come) - Feb. 16

USF EXPO - Feb. 17-18

Engineering Banquet - Feb. 24

(registration on Page 6)



March 2005

Women's History Month

Regional Conf. at Auburn Univ. - Mar. 11-13

Odyssey of the Mind - March 12

St Patrick's Day - Mar. 17

Women's Forum - USF - Mar. 23



April 2005

April Fool's Day - April 1

Leadership Forum with Mary Owens - Apr. 14



USF Engineering EXPO

February 17 & 18, 2005

Have you experienced the USF's Engineering EXPO?

Engineering EXPO has been a part of the College of Engineering since 1974. Since then it has grown to become one of the largest events held at the University of South Florida Tampa campus. The EXPO showcases countless engineering exhibitions, contests, participatory engineering labs and presentations all geared for fun and learning. It's truly amazing the effort put on by USF and many volunteers each year.

EXPO also provides students and adults alike the rare opportunity of interacting with the leading technical and engineering firms and USF's student body and faculty members. If you know someone who is interested in the engineering field, bring them along!

For more details and directions:

<http://expo.eng.usf.edu/index.php>

SWE in Perspective

...continued from Page 1

student section president, has surpassed her duty of ensuring a smooth transition to new leadership at the USF SWE Section. For this, the two sections are recognizing her. Unfortunately, SWE-TBA does not have a section nominee for the Engineer of the Year award.

As well as announcing the West Coast Engineer of the Year, Jim Buckley of NOAA will discuss the status of Aquarius, NOAA's Innerspace Station located in the Florida Keyes National Marine Sanctuary. Rudy Henning will be representing YES, We Care.

See the Page 6 for the registration form and details. Look for the SWE booth upon entering the lobby. If you would like to sponsor a student attending the event, contact any of the SWE-TBA officers. Many companies will reimburse the registration fee.



SWE Volunteers...



SWE JUDGES AT LEGO LEAGUE COMPETITION

Recently SWE members participated as Judges in the Lego League Competition in St. Petersburg. Here's what Seung Park had to say about her experience:

"It was great seeing the kids work on their robots and compete in the event. I judged their research projects and I was very impressed with their work. The research project topic was to provide a solution to the difficulties that may be faced by the people with disabilities. The ideas that each team put together were unique and some were very innovative. To sum it up, it was a great event with lots of fun. I will volunteer again at next year's."

The Great American Teach In

Sorry! No photos from the PACE Center for GIRLS Volunteer Event. If you volunteered for Great American Teach, let us know about it. Email Sandy Pettit at sandy.pettit@swe.org.

UPCOMING VOLUNTEER OPPORTUNITIES

Odyssey of the Mind

SWE was asked to participate as a judge or captain for this year's Odyssey of the Mind event to take place on March 12 at USF. Odyssey of the Mind is an international educational program that provides creative problem-solving opportunities for students from kindergarten through college. Kids apply their creativity to solve problems that range from building mechanical devices to presenting their own interpretation of literary

classics. They then bring their solutions to competition on the local, state, and World level. Thousands of teams from throughout the U.S. and from about 25 other countries participate in the program. Some volunteer positions will require training in February. Contact Sandy Pettit or Karen Karvazy if you want to join in.

Visit www.odysseyofthemind.com/learn_more.php for more information.



Introducing...

Karen Karvazy, P.E., Publicity Chair & Newsletter Editor

Hello Fellow SWE Members:

This year is my first year serving SWE as an Officer and I am still meeting many of you. With many activities in store for the rest of the year, I'm looking forward to sharing great experiences.

So far this year I've had the opportunity to participate in the *Great American Teach In* with Carissa Giblin where we spent an afternoon at the PACE Center for Girls. Part of the fun was sharing what we do on a day to day basis. We hope we'll be able to spend another afternoon with the same group of girls in February at the USF Engineering EXPO. Also, I prepare the newsletter for our section, so if you have something to contribute please write in!

I am a senior environmental engineer for a great consulting firm based out of Lakeland, FL named Chastain-Skillman, Inc. I focus on municipal wastewater and water design and planning. I feel like consulting for municipalities is a nice niche in the business because while there are many technical challenges, I am also required to look at the big picture when it comes to evaluating their water or wastewater system improvement projects. There are tangible results from the projects I work, which I really enjoy.

I am originally from North Carolina and I obtained my Bachelor's Degree in Environmental Engineering from North



Karen Karvazy, SWE - Tampa Bay

Carolina State and my Master's Degree from Duke University. Along the path, I've also taken the time out to travel, live in another country, learn fluent Spanish, find a passion for swing and latin dancing, experiment in cooking, and perform on stage for an improvisational theater troupe among other fun and exciting activities.

I enjoy SWE because I can compare notes with other women, exchange ideas, and just have fun! There seems to be a common thread. The technical background similarities are clear, but it's the small ideas and inspiration I get from others that keeps me coming back!

SWENEWS is distributed through e-SWE, the Tampa Bay Area Section listserv. If you would like to register for e-SWE (and receive *SWENEWS* and other announcements), contact carissa.giblin@swe.org

Society of Women Engineers Headquarters

230 E. Ohio Street, Suite 400
Chicago, IL 60611-3265
312-596-5223
312-644-8557 fax
hq@swe.org
<http://www.swe.org>

2005 ENGINEERS WEEK BANQUET REGISTRATION FORM

FEBRUARY 24, 2005

Marriott Tampa Airport
Tampa, FL

Speakers:

Dr. Rudy Henning, P.E. – Y.E.S. We Care!
Jim Buckley – Aquarius Operations Manager,
NOAA Undersea Research Center

Special Guest Emcee:

Dr. Mel Anderson, P.E., Prof. Emeritus, USF

Program

4:30 Exhibits, Reception, & Cash Bar
6:00 Banquet Seating
6:15 Welcome and Dinner
7:00 Dr. Henning
7:20 Mr. Buckley
7:50 Awards

_____ \$45.00 Early registration (**BY or BEFORE February 18, 2005**)

_____ \$55.00 Late registration (**AFTER February 18, 2005**) *Walk-ups will be taken on a space-available basis only.*

_____ \$35.00 Student registration

_____ \$150.00 Sponsor - Name of organization listed in program and displayed throughout the event. *Includes one complimentary registration; please provide name below.* **Respond by February 18, 2005.**

_____ \$250.00 Exhibitor - Name of organization listed in program and displayed throughout the event, along with a display table in the exhibitor area. *Includes one complimentary registration; please provide name below.*

Exhibitor space is limited, and requests will be granted on a “first come, first served” basis, by or before February 18, 2005.

_____ \$600.00 Table Sponsor - Name of organization listed in program and throughout the event, along with a reserved table for ten registrants. Your organization’s name will be prominently displayed in the center of the table. *Please use an additional page to provide the other nine registrants’ names and meal selections.* **Respond by February 18, 2005.**

Name: _____
(Please include professional designation(s) after name, i.e., PE, PLS, AICP, etc.)

Organization: _____

Address: _____

Phone: _____ E-mail: _____

Additional Registration for Spouse/Guest: _____

PAYMENT MUST ACCOMPANY COMPLETED REGISTRATION FORM.

Make checks payable to:

Mail registration forms and checks to:

Engineers Week Committee
John Marquardt, HSA Engineers & Scientists
4019 E. Fowler Ave.
Tampa, FL 33617
(813)971-3882

For questions, please call Greg
Harrell at (813)246-5527

Entrée (choose one)

- ___ Chicken selection
___ Vegetarian selection

All entrées include salad, dinner rolls, vegetable, iced tea, water, coffee, and dessert.